

# YA30000

YA2000  
YA3000  
YA5000

YA8000  
YA10000  
YA18000

**YA30000**  
YA50000  
YA80000

YA100000



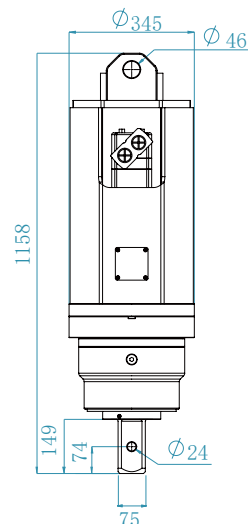
## EXCAVATOR

**15-22 ton**

## DIAMETER RANGE

**150-1500 mm**

## AUGER DRIVE



## PRODUCT PARAMETER (SPECIFICATION)

Output Torque	16500-30000 Nm	Weight (Auger drive)	255 kgs
Rated power	94 kw	Overall Length	1158 mm
Pressure	160-260 Bar	Hydraulic Hose	1" BSP
Oil Flow	80-170 LPM	Output Shaft Size	75mm square
Output Shaft Speed	12-28 RPM		/

## PRODUCT APPLICATIONS

- Garden construction: drilling operations of tree planting, fence piling and landscaping etc.
- Civil construction: drilling operations for road signs, poles, foundation piles etc.
- Engineering construction: drilling operations of well drilling, spiral pile installation, rod and mast installation, etc.
- New energy construction: solar energy equipment installation, wind turbine installation and other operations.

## APPLICATIONS



Landscape construction



Foundation Pile Driving



Drilling



Afforestation



Utility Work



Dredging

\*The data provided above is not binding, as the manufacturer reserves itself the right to make improvements to its products at any time and with no advance notice.

# YA30000

YA2000  
YA3000  
YA5000

YA8000  
YA10000  
YA18000

**YA30000**  
YA50000  
YA80000

YA100000



## AUGER

## DIAMETER RANGE

150-1500 mm

### W2 EARTH AUGERS (EARTH/ CLAY/ SHALES)



#### ALL PURPOSE EARTH AUGER FOR GENERAL DRILLING

Efficient and cost effective auger for general purpose drilling in earth, clay, shale and soft rocks. Multi-faced tungsten providing longer wear life and greater cutting performance.

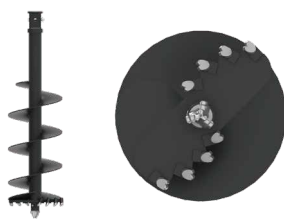


A0P2 PILOT



A0T2 TEETH

### W3 COMBINATION AUGER (ALL GROUND CONDITIONS)



#### TAPER TEETH DESIGN THE ULTIMATE ALL PERFORMANCE AUGER

The angle and geometry of the teeth to the pilot is the key to the efficiency in which these augers perform. This auger is fitted with Tungsten Taper Teeth for the ultimate ripping ability in fracturable rock, permafrost and general earth conditions.



A0P3 PILOT



A0T3 TEETH

### W4 ROCK AUGER (CONCRETE/ SHALE/ FRACTURABLE ROCK)



#### HEAVY DUTY AUGER FOR DEDICATED ROCK DRILLING

YICHEN Rock augers - heavy duty engineered design, with high efficiency cutting heads to maximize your rock drilling performance. Fitted with a range of quality wear parts providing superior wear and performance.



A0P4 PILOT

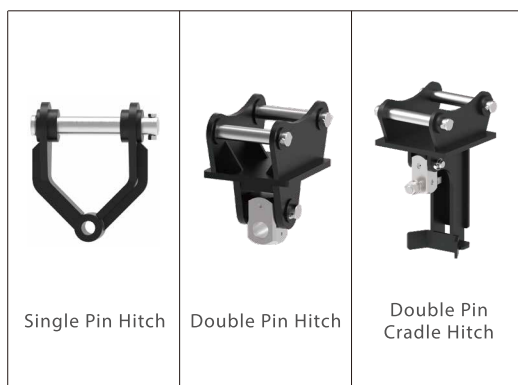


A0T4 TEETH

## HITCH

## EXTENSION

## PRODUCT PARAMETER (SPECIFICATION)



Diameter (mm)	Drilling Depth(m)		
	Soft	Medium	Hard
150- 400	9.0	8.2	7.3
450	8.6	7.7	7.0
500	8.6	7.7	7.0
550	8.6	7.7	7.0
600	8.6	7.7	7.0
650	8.4	7.5	6.8
700	8.0	7.3	6.6
800	7.6	6.8	6.2
900	7.0	6.3	5.7
1000	6.5	6.0	5.3
1100	6.3	5.7	5.0
1200	6.0	5.5	4.8
1500	5.0	4.6	4.0

## APPLICATIONS



Landscape construction



Foundation Pile Driving



Drilling



Afforestation



Utility Work



Dredging

\*The data provided above is not binding, as the manufacturer reserves itself the right to make improvements to its products at any time and with no advance notice.