

YA50000

YA2000
YA3000
YA5000

YA8000
YA10000
YA18000

YA30000
YA50000
YA80000

YA100000



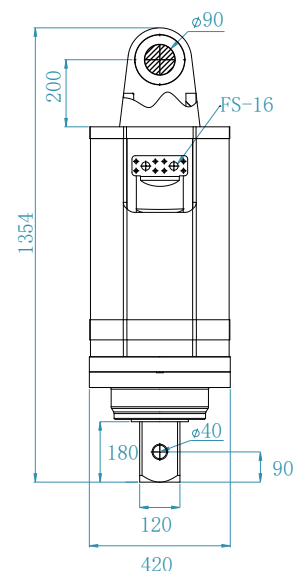
EXCAVATOR

20-36 ton

DIAMETER RANGE

300-1800 mm

AUGER DRIVE



PRODUCT PARAMETER (SPECIFICATION)

Output Torque	30000-50000 Nm	Weight (Auger drive)	460 kgs
Rated power	157 kw	Overall Length	1354 mm
Pressure	220-350 Bar	Hydraulic Hose	1"BSP 1-1/4"
Oil Flow	100-300 LPM	Output Shaft Size	110mm square
Output Shaft Speed	0-30 RPM		/

PRODUCT APPLICATIONS

- Garden construction: drilling operations of tree planting, fence piling and landscaping etc.
- Civil construction: drilling operations for road signs, poles, foundation piles etc.
- Engineering construction: drilling operations of well drilling, spiral pile installation, rod and mast installation, etc.
- New energy construction: solar energy equipment installation, wind turbine installation and other operations.

APPLICATIONS



Landscape construction



Foundation Pile Driving



Drilling



Afforestation



Utility Work



Dredging

*The data provided above is not binding, as the manufacturer reserves itself the right to make improvements to its products at any time and with no advance notice.

YA50000

YA2000
YA3000
YA5000

A8000
YA10000
YA18000

YA30000
YA50000
YA80000

YA100000



AUGER

DIAMETER RANGE

300-1800 mm

W2 EARTH AUGERS (EARTH/ CLAY/ SHALES)



ALL PURPOSE EARTH AUGER FOR GENERAL DRILLING

Efficient and cost effective auger for general purpose drilling in earth, clay, shale and soft rocks. Multi-faced tungsten providing longer wear life and greater cutting performance.

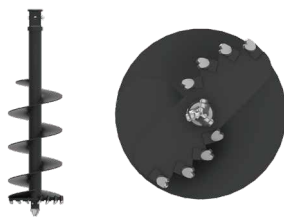


A0P2 PILOT



A0T2 TEETH

W3 COMBINATION AUGER (ALL GROUND CONDITIONS)



TAPER TEETH DESIGN THE ULTIMATE ALL PERFORMANCE AUGER

The angle and geometry of the teeth to the pilot is the key to the efficiency in which these augers perform. This auger is fitted with Tungsten Taper Teeth for the ultimate ripping ability in fracturable rock, permafrost and general earth conditions.



A0P3 PILOT



A0T3 TEETH

W4 ROCK AUGER (CONCRETE/ SHALE/ FRACTURABLE ROCK)



HEAVY DUTY AUGER FOR DEDICATED ROCK DRILLING

YICHEN Rock augers - heavy duty engineered design, with high efficiency cutting heads to maximize your rock drilling performance. Fitted with a range of quality wear parts providing superior wear and performance.

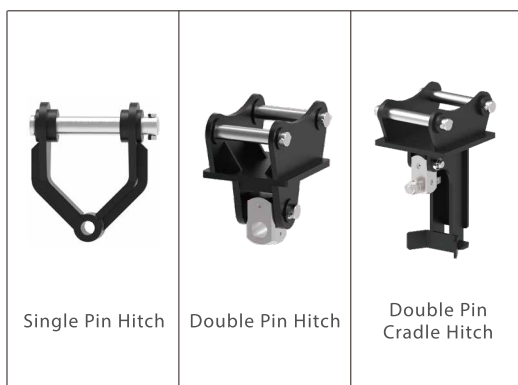


A0P4 PILOT



A0T4 TEETH

HITCH



Single Pin Hitch

Double Pin Hitch

Double Pin
Cradle Hitch

EXTENSION



Auger Extension
(Customizable)

PRODUCT PARAMETER (SPECIFICATION)

Diameter (mm)	Drilling Depth(m)		
	Soft	Medium	Hard
300-450	12	11	8
500	12	11	8
550	11	10	7
600	11	10	7
650	11	10	7
700	10	9	7
800	9	7	6
900	9	7	6
1000	8	6	5
1100	8	6	5
1200	7	5	5
1500	6	5	4
1800	4	3.3	2.5

APPLICATIONS



Landscape construction



Foundation Pile Driving



Drilling



Afforestation



Utility Work



Dredging

*The data provided above is not binding, as the manufacturer reserves itself the right to make improvements to its products at any time and with no advance notice.