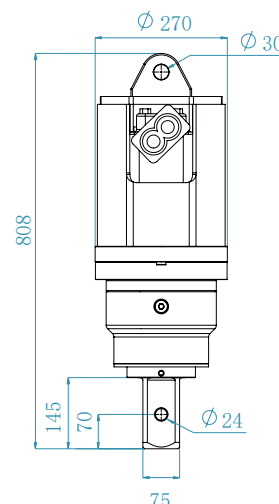


YA8000

YA2000	YA8000	YA30000	YA100000
YA3000	YA10000	YA50000	
YA5000	YA18000	YA80000	



AUGER DRIVE



PRODUCT PARAMETER (SPECIFICATION)

Output Torque	2130- 8000 Nm	Weight (Auger drive)	124 kgs
Rated power	67 kw	Overall Length	808 mm
Pressure	80- 260 Bar	Hydraulic Hose	1/2"BSP (Or 3/4"BSP)
Oil Flow	60- 135 LPM	Output Shaft Size	2.5" hex
Output Shaft Speed	35- 80 RPM		75mm square

PRODUCT APPLICATIONS

- Garden construction: drilling operations of tree planting, fence piling and landscaping etc.
- Civil construction: drilling operations for road signs, poles, foundation piles etc.
- Engineering construction: drilling operations of well drilling, spiral pile installation, rod and mast installation, etc.
- New energy construction: solar energy equipment installation, wind turbine installation and other operations.

APPLICATIONS



Landscape construction



Foundation Pile Driving



Drilling



Afforestation



Utility Work



Dredging

*The data provided above is not binding, as the manufacturer reserves itself the right to make improvements to its products at any time and with no advance notice.

YA8000

YA2000
YA3000
YA5000

YA8000
YA10000
YA18000

YA30000
YA50000
YA80000

YA100000



AUGER

DIAMETER RANGE

150-900 mm

W2 EARTH AUGERS (EARTH/ CLAY/ SHALES)



ALL PURPOSE EARTH AUGER FOR GENERAL DRILLING

Efficient and cost effective auger for general purpose drilling in earth, clay, shale and soft rocks. Multi-faced tungsten providing longer wear life and greater cutting performance.

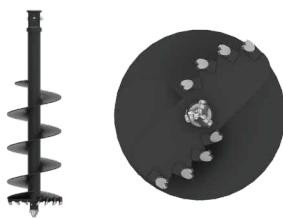


A0P2 PILOT



A0T2 TEETH

W3 COMBINATION AUGER (ALL GROUND CONDITIONS)



TAPER TEETH DESIGN THE ULTIMATE ALL PERFORMANCE AUGER

The angle and geometry of the teeth to the pilot is the key to the efficiency in which these augers perform. This auger is fitted with Tungsten Taper Teeth for the ultimate ripping ability in fracturable rock, permafrost and general earth conditions.



A0P3 PILOT



A0T3 TEETH

W4 ROCK AUGER (CONCRETE/ SHALE/ FRACTURABLE ROCK)



HEAVY DUTY AUGER FOR DEDICATED ROCK DRILLING

YICHEN Rock augers - heavy duty engineered design, with high efficiency cutting heads to maximize your rock drilling performance. Fitted with a range of quality wear parts providing superior wear and performance.



A0P4 PILOT



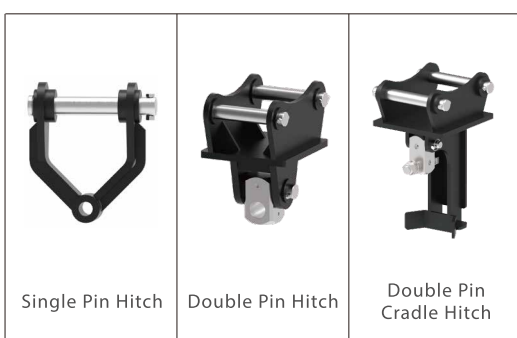
A0T4 TEETH

HITCH

EXTENSION

PRODUCT PARAMETER (SPECIFICATION)

Diameter (mm)	Drilling Depth(m)		
	Soft	Medium	Hard
150- 500	6.5	5.5	5.0
550	4.5	4.5	3.5
600	4.0	3.7	3.5
650	4.0	3.7	3.5
700	4.0	3.7	3.2
750	3.6	3.5	3.0
800	3.0	2.8	2.4
850	2.6	2.7	2.4
900	2.5	2.2	2.0
/	/	/	/
/	/	/	/



APPLICATIONS



Landscape construction



Foundation Pile Driving



Drilling



Afforestation



Utility Work



Dredging

*The data provided above is not binding, as the manufacturer reserves itself the right to make improvements to its products at any time and with no advance notice.