

# YA80000

YA2000  
YA3000  
YA5000

YA8000  
YA10000  
YA18000

YA30000  
YA50000  
YA80000

YA100000



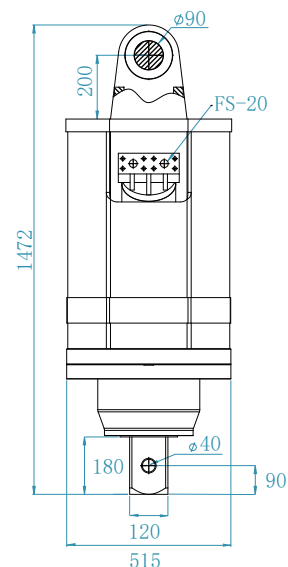
EXCAVATOR

26-40 ton

DIAMETER RANGE

300-2000 mm

## AUGER DRIVE



### PRODUCT PARAMETER (SPECIFICATION)

Output Torque	50000-80000 Nm	Weight (Auger drive)	770 kgs
Rated power	157 kw	Overall Length	1572 mm
Pressure	220-350 Bar	Hydraulic Hose	SAE FS- 20 1- 1/4"
Oil Flow	200-400 LPM	Output Shaft Size	110mm square
Output Shaft Speed	0-20 RPM		/

### PRODUCT APPLICATIONS

- Garden construction: drilling operations of tree planting, fence piling and landscaping etc.
- Civil construction: drilling operations for road signs, poles, foundation piles etc.
- Engineering construction: drilling operations of well drilling, spiral pile installation, rod and mast installation, etc.
- New energy construction: solar energy equipment installation, wind turbine installation and other operations.

## APPLICATIONS



Landscape construction



Foundation Pile Driving



Drilling



Afforestation



Utility Work



Dredging

\*The data provided above is not binding, as the manufacturer reserves itself the right to make improvements to its products at any time and with no advance notice.

# YA80000

YA2000  
YA3000  
YA5000

YA8000  
YA10000  
YA18000

YA30000  
YA50000  
YA80000

YA100000



## AUGER

## DIAMETER RANGE

300-2000 mm

### W2 EARTH AUGERS (EARTH/ CLAY/ SHALES)



#### ALL PURPOSE EARTH AUGER FOR GENERAL DRILLING

Efficient and cost effective auger for general purpose drilling in earth, clay, shale and soft rocks. Multi-faced tungsten providing longer wear life and greater cutting performance.

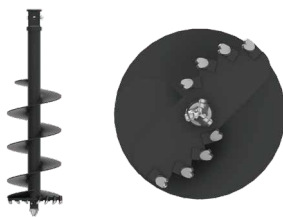


A0P2 PILOT



A0T2 TEETH

### W3 COMBINATION AUGER (ALL GROUND CONDITIONS)



#### TAPER TEETH DESIGN THE ULTIMATE ALL PERFORMANCE AUGER

The angle and geometry of the teeth to the pilot is the key to the efficiency in which these augers perform. This auger is fitted with Tungsten Taper Teeth for the ultimate ripping ability in fracturable rock, permafrost and general earth conditions.



A0P3 PILOT



A0T3 TEETH

### W4 ROCK AUGER (CONCRETE/ SHALE/ FRACTURABLE ROCK)



#### HEAVY DUTY AUGER FOR DEDICATED ROCK DRILLING

YICHEN Rock augers - heavy duty engineered design, with high efficiency cutting heads to maximize your rock drilling performance. Fitted with a range of quality wear parts providing superior wear and performance.

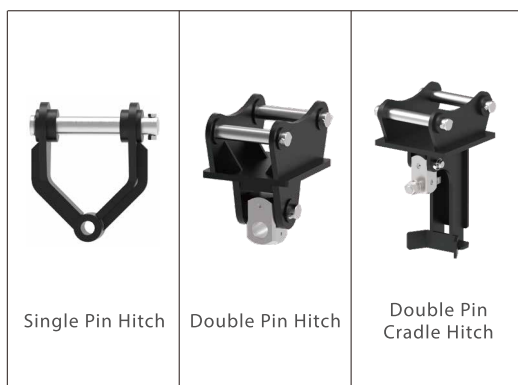


A0P4 PILOT



A0T4 TEETH

## HITCH



Single Pin Hitch

Double Pin Hitch

Double Pin  
Cradle Hitch

## EXTENSION



Auger Extension  
(Customizable)

## PRODUCT PARAMETER (SPECIFICATION)

Diameter (mm)	Drilling Depth(m)		
	Soft	Medium	Hard
300-600	15	11	8
700	14	10	7
800	14	10	7
900	14	10	7
1000	12	9	7
1100	12	9	7
1200	10	8	6
1500	8	7	6
1800	8	7	6
2000	7	6	5
/	/	/	/
/	/	/	/

## APPLICATIONS



Landscape construction



Foundation Pile Driving



Drilling



Afforestation



Utility Work



Dredging

\*The data provided above is not binding, as the manufacturer reserves itself the right to make improvements to its products at any time and with no advance notice.