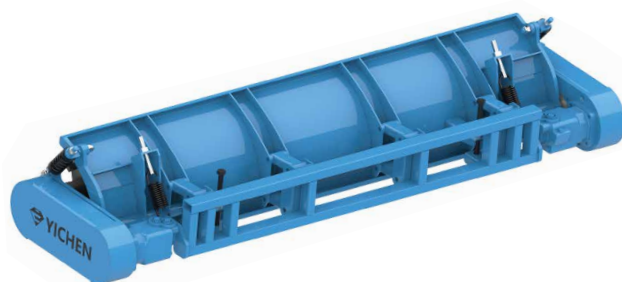
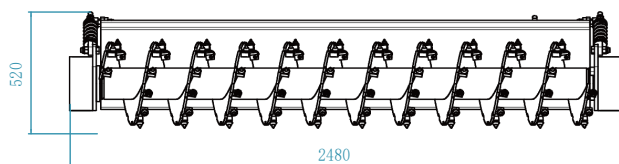
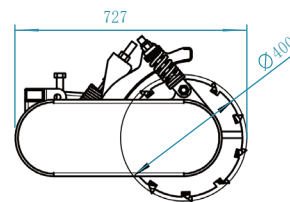
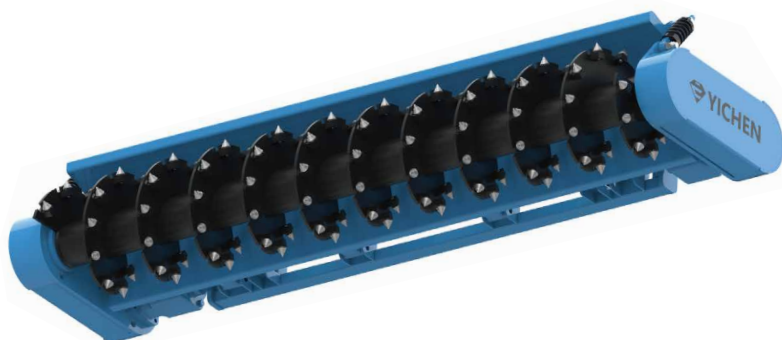


YF-2200DI PAVEMENT DE-ICING ATTACHMENT



For de-icing works on frozen road surfaces in highways, urban roads, airports, squares, and scenic areas.

PRODUCT FEATURES

1. Can be installed on various base machines with hydraulic systems such as engineering vehicles, excavators, loaders, etc.
2. Suitable for removing ice and snow layers on flat and uneven road surfaces. During the working, the hydraulic system automatically adjusts the impact force and pressure of each mechanism on the ice and snow layer according to the situation. Flexible and elastic knocking.
3. Efficient cleaning of hard ice and snow layers, can replace 500 manpower.
4. Easy to operate, low maintenance, environmentally friendly and pollution-free.

PRODUCT PARAMETER (SPECIFICATION)

Max Power Output	70 kW	Output Torque	3290 Nm@240bar
Max Flow	200 LPM	Output Shaft Speed	209 RPM
Recommended Flow	120-180 LPM	Weight	500 kgs
Pressure	240 bar	Cutter Bit	102 个

Note: If oil specification is below 46 centistokes at 40 °C (ISO HV46) the performance must be down rated. Please contact YICHEN for further information.



APPLICATIONS



Tunneling



Utility Work



Roadworks



Clear



Landscape construction

*The data provided above is not binding, as the manufacturer reserves itself the right to make improvements to its products at any time and with no advance notice.