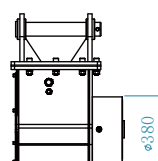
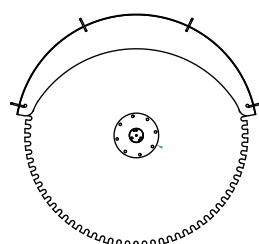


# YS-15SS

YS-30DS YS-20SS YS-05SS  
YS-20DS **YS-15SS** YS-02SS  
YS-25SS YS-10SS



## EXCAVATOR

# 15-25<sub>ton</sub>

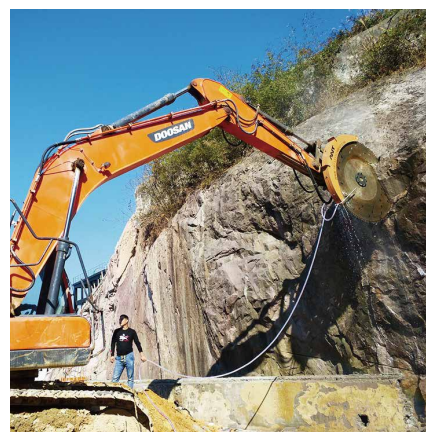
## PRODUCT APPLICATIONS

- Building demolition, cutting reinforced concrete, cement pavement, highway construction and maintenance operations.
- Crushing operation after cutting hard rock.
- Excavation of foundation, rock and concrete of basement.
- Underground cable trench cutting operation.
- Quarry excavation operations, rock waste reshaping, cutting and other operations.
- Rocky tunnel excavation, rocky trench excavation and other operations.

## PRODUCT PARAMETER (SPECIFICATION)

Max Power Output	59 kW	Output Shaft Speed	0- 500 RPM
Max Flow	300 LPM	Weight	450 kgs
Recommended Flow	150- 290 LPM	Saw Blade spec.	Φ 1600- 2200 mm
Max Pressure	315 bar	Applicable Materials	granite, basalt, marble, reinforced concrete
Output Torque	3100 Nm@315bar		

**Note:** The rock saw can cut aluminum and reinforced concrete by changing different specifications of saw blades.  
The rock saw can work with any hydraulic driven mechanical equipment.



## APPLICATIONS



Demolition



Tunneling



Stone Production



Roadworks



Quarries



Trenching



Metal cutting

\*The data provided above is not binding, as the manufacturer reserves itself the right to make improvements to its products at any time and with no advance notice.