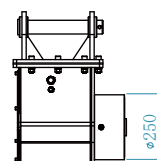
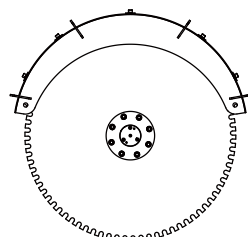


YS-05SS

YS-30DS YS-20SS YS-05SS
YS-20DS YS-15SS YS-02SS
YS-25SS YS-10SS



EXCAVATOR

5-10_{ton}

PRODUCT APPLICATIONS

- Building demolition, cutting reinforced concrete, cement pavement, highway construction and maintenance operations.
- Crushing operation after cutting hard rock.
- Excavation of foundation, rock and concrete of basement.
- Underground cable trench cutting operation.
- Quarry excavation operations, rock waste reshaping, cutting and other operations.
- Rocky tunnel excavation, rocky trench excavation and other operations.

PRODUCT PARAMETER (SPECIFICATION)

Max Power Output	33 kW	Output Shaft Speed	0- 500 RPM
Max Flow	105 LPM	Weight	250 kgs
Recommended Flow	60- 100 LPM	Saw Blade spec.	Φ 800- 1400 mm
Max Pressure	315 bar	Applicable Materials	granite, basalt, marble, reinforced concrete
Output Torque	600 Nm@315bar		

Note: The rock saw can cut aluminum and reinforced concrete by changing different specifications of saw blades.
The rock saw can work with any hydraulic driven mechanical equipment.
The rock saw can install two saw blades at the same time(on the same side), the distance between the blades is 50-200mm. Saw blade cover can be installed 360° freely.



APPLICATIONS



Demolition



Tunneling



Stone Production



Roadworks



Quarries



Trenching

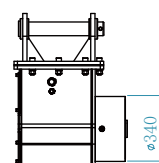
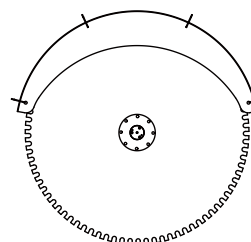


Metal cutting

*The data provided above is not binding, as the manufacturer reserves itself the right to make improvements to its products at any time and with no advance notice.

YS-10SS

YS-30DS YS-20SS YS-05SS
YS-20DS YS-15SS YS-02SS
YS-25SS **YS-10SS**



EXCAVATOR

8-16 ton

PRODUCT APPLICATIONS

- Building demolition, cutting reinforced concrete, cement pavement, highway construction and maintenance operations.
- Crushing operation after cutting hard rock.
- Excavation of foundation, rock and concrete of basement.
- Underground cable trench cutting operation.
- Quarry excavation operations, rock waste reshaping, cutting and other operations.
- Rocky tunnel excavation, rocky trench excavation and other operations.

PRODUCT PARAMETER (SPECIFICATION)

Max Power Output	48 kW	Output Shaft Speed	0- 468 RPM
Max Flow	160 LPM	Weight	350 kgs
Recommended Flow	100- 150 LPM	Saw Blade spec.	Φ 1400- 2000 mm
Max Pressure	315 bar	Applicable Materials	granite, basalt, marble, reinforced concrete
Output Torque	1580 Nm@315bar		

Note: The rock saw can cut aluminum and reinforced concrete by changing different specifications of saw blades.
The rock saw can work with any hydraulic driven mechanical equipment.
The rock saw can install two saw blades at the same time(on the same side), the distance between the blades is 50-200mm. Saw blade cover can be installed 360° freely.



APPLICATIONS



Demolition



Tunneling



Stone Production



Roadworks



Quarries



Trenching

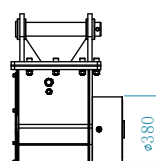
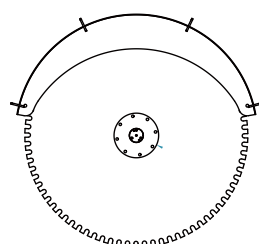


Metal cutting

*The data provided above is not binding, as the manufacturer reserves itself the right to make improvements to its products at any time and with no advance notice.

YS-15SS

YS-30DS YS-20SS YS-05SS
YS-20DS **YS-15SS** YS-02SS
YS-25SS YS-10SS



EXCAVATOR

15-25_{ton}

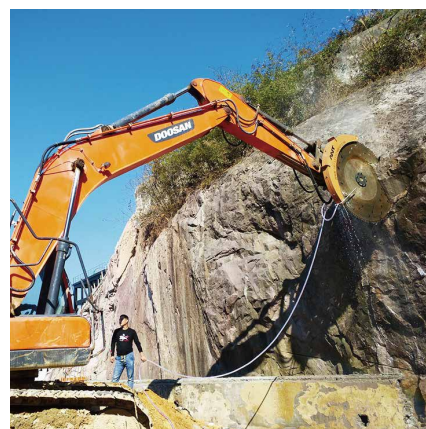
PRODUCT APPLICATIONS

- Building demolition, cutting reinforced concrete, cement pavement, highway construction and maintenance operations.
- Crushing operation after cutting hard rock.
- Excavation of foundation, rock and concrete of basement.
- Underground cable trench cutting operation.
- Quarry excavation operations, rock waste reshaping, cutting and other operations.
- Rocky tunnel excavation, rocky trench excavation and other operations.

PRODUCT PARAMETER (SPECIFICATION)

Max Power Output	59 kW	Output Shaft Speed	0- 500 RPM
Max Flow	300 LPM	Weight	450 kgs
Recommended Flow	150- 290 LPM	Saw Blade spec.	Φ 1600- 2200 mm
Max Pressure	315 bar	Applicable Materials	granite, basalt, marble, reinforced concrete
Output Torque	3100 Nm@315bar		

Note: The rock saw can cut aluminum and reinforced concrete by changing different specifications of saw blades.
The rock saw can work with any hydraulic driven mechanical equipment.



APPLICATIONS



Demolition



Tunneling



Stone Production



Roadworks



Quarries



Trenching

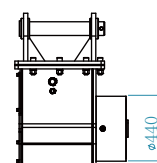
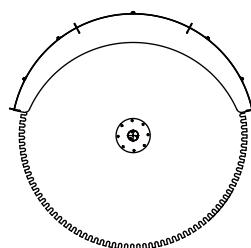


Metal cutting

*The data provided above is not binding, as the manufacturer reserves itself the right to make improvements to its products at any time and with no advance notice.

YS-20SS

YS-30DS YS-20SS YS-05SS
YS-20DS YS-15SS YS-02SS
YS-25SS YS-10SS



EXCAVATOR

20-45_{ton}

PRODUCT APPLICATIONS

- Building demolition, cutting reinforced concrete, cement pavement, highway construction and maintenance operations.
- Crushing operation after cutting hard rock.
- Excavation of foundation, rock and concrete of basement.
- Underground cable trench cutting operation.
- Quarry excavation operations, rock waste reshaping, cutting and other operations.
- Rocky tunnel excavation, rocky trench excavation and other operations.

PRODUCT PARAMETER (SPECIFICATION)

Max Power Output	80 kW	Output Shaft Speed	0- 400 RPM
Max Flow	420 LPM	Weight	750 kgs
Recommended Flow	200- 390 LPM	Saw Blade spec.	Φ 2200- 3600 mm
Max Pressure	315 bar	Applicable Materials	granite, basalt, marble, reinforced concrete
Output Torque	4900 Nm@315bar		

Note: The rock saw can cut aluminum and reinforced concrete by changing different specifications of saw blades.
The rock saw can work with any hydraulic driven mechanical equipment.



APPLICATIONS



Demolition



Tunneling



Stone Production



Roadworks



Quarries



Trenching

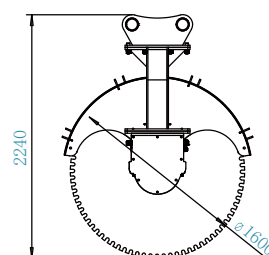
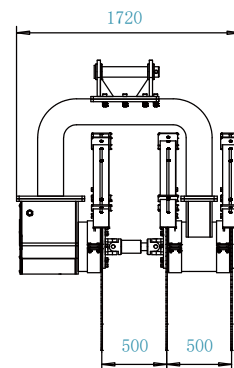
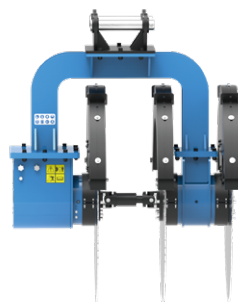


Metal cutting

*The data provided above is not binding, as the manufacturer reserves itself the right to make improvements to its products at any time and with no advance notice.

YS-20TS

YS-30DS YS-20SS YS-05SS **YS-20TS**
 YS-20DS YS-15SS YS-02SS
 YS-25SS YS-10SS YS-20RS



EXCAVATOR

20-45_{ton}

PRODUCT APPLICATIONS

- Building demolition
- Cutting reinforced concrete, cement pavement
- Excavation of foundation, rock and concrete of basement.
- Underground cable trench cutting operation.
- Quarry excavation operations,
- Rock waste reshaping, cutting and other operations.
- Rocky tunnel or trench excavation

PRODUCT PARAMETER (SPECIFICATION)

Max Power Output	125 kW	Output Shaft Speed	375rpm@300Lpm
Max Flow	320 LPM	Weight	2000 kgs
Recommended Flow	200-300 LPM	Saw Blade spec.	Φ 1600 mm
Max Pressure	315 bar	Applicable Materials	granite, basalt, marble, reinforced concrete
Output Torque	4032 Nm@300bar		

Note: The rock saw can cut aluminum and reinforced concrete by changing different specifications of saw blades.
 The rock saw can work with any hydraulic driven mechanical equipment.
 between the blades is 50-200mm. Saw blade cover can be installed 360° freely.



APPLICATIONS



Demolition



Tunneling



Stone Production



Roadworks



Quarries



Trenching

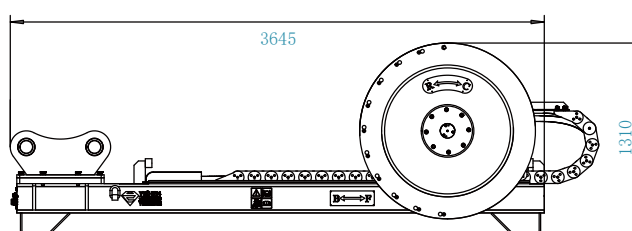
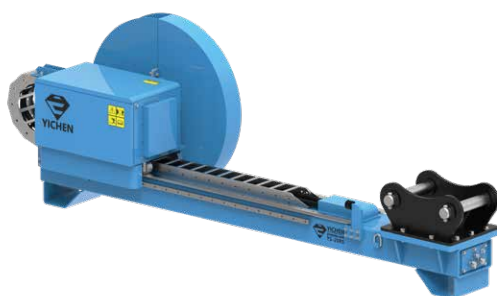
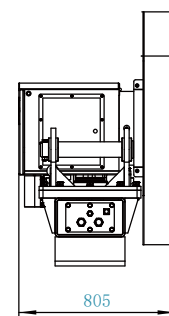
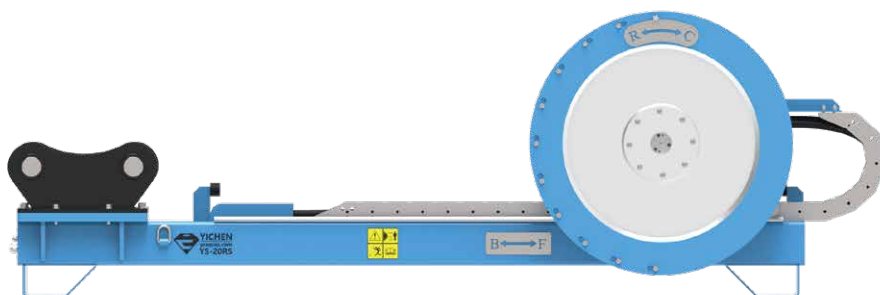


Metal cutting

*The data provided above is not binding, as the manufacturer reserves itself the right to make improvements to its products at any time and with no advance notice.

YS-20RS

YS-30DS YS-20SS YS-05SS YS-20TS
YS-20DS YS-15SS YS-02SS
YS-25SS YS-10SS **YS-20RS**



EXCAVATOR

20-45_{ton}

PRODUCT APPLICATIONS

- Building demolition
- Cutting reinforced concrete
- Excavation of foundation, rock and concrete of basement.
- Underground cable trench cutting operation.
- Quarry excavation operations,
- Rock waste reshaping, cutting and other operations.

PRODUCT PARAMETER (SPECIFICATION)

Max Power Output	120 kW	Output Shaft Speed	0- 450 RPM
Max Flow	350 LPM	Weight	1050 kgs
Recommended Flow	180-320 LPM	Saw Blade spec.	Φ 11.8 mm
Max Pressure	315 bar		1600 mm
Output Torque	3990 Nm@315bar	Applicable Materials	granite, basalt, marble, reinforced concrete

Note: The rock saw can work with any hydraulic driven mechanical equipment.



APPLICATIONS



Demolition



Tunneling



Stone Production



Roadworks



Quarries



Trenching



Metal cutting

*The data provided above is not binding, as the manufacturer reserves itself the right to make improvements to its products at any time and with no advance notice.